



Manual

ASC XS Lift

Conform NEN-EN 1298 – IM – nl x en x de x fr

Conform NEN EN 1495 MCWP

This manual is property of:

ASC Group
Leerlooierstraat 32
4871 EN Etten-Leur
The Netherlands



Disclaimer

Disclaimer This documentation has been provided with the utmost care by ASC Group.

All rights reserved. No part of this publication may be reproduced, stored in a retrieval system, or transmitted in any form or by any means, electronic, mechanical, photocopying, recording, or otherwise, without the prior written permission from ASC Group. This publication may only be used for ASC Group products. Typesetting and printing errors reserved.

If you have any questions, please contact ASC Group:

Leerlooierstraat 32
4871 EN Etten-Leur
Nederland
www.ASCGroup.nl
+3176 5413019

Table of contents

Manual	1
1 Overview	5
1.1 Application	5
1.2 List of components	5
2 Assembly and use	6
2.1 Positioning of the XS Lift	6
2.1.1. Sureface	6
2.1.2. Lighting	6
2.1.3. Obstacles	6
2.1.4. Weather conditions	6
2.2 Personal protection equipment	6
2.3 Assembly	6
2.4 Assembly Instructions	7
2.5 Assembly Instructions for the Extended Mast	8
2.6 Use	8
2.6.0. Bolts and bushes of the rolling mechanism	8
2.6.1. Large locking pin and clip	9
2.6.2. Wire rope	9
2.6.3. Winch	9
2.6.4. Locking system	9
2.7 Using of the XS-Lift	9
2.7.0. Extension / raising	10
2.7.1. Maximum Authorized Weight	10
2.7.2. Further loads	10
2.7.3. Stabilization	10
2.7.4. Extension of the platform	10
2.7.5. Side boards	10
2.7.6. Brakes	10
2.7.7. Moving	10
2.8 Chemical products	11
3 Inspection, care and maintenance	11
3.1 The Health and Safety Law	11
3.1.1. Annual control	11
3.1.2. Self-inspection	11

3.1.3.	Damages	11
3.1.4.	What to do in the event of damage	11
3.1.5.	Repair	11
3.2	Transport	12
3.3	Maintenance	12
3.3.0.	Roller tube	12
3.3.1.	Lifting cable	12
3.3.2.	Winch	12
3.4	Storage	12
4	Technical Specifications	13
4.1	Base Frame	13
4.2	Mast (below and above)	13
4.1	Lifting bucket	14
4.2	General specifications XS-lift	14
4.3	Problem solutions	15

1 Overview

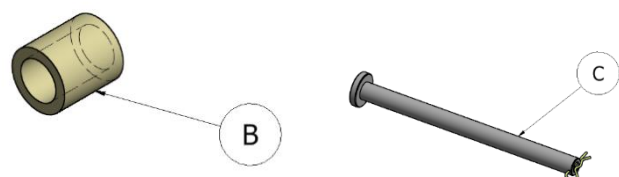
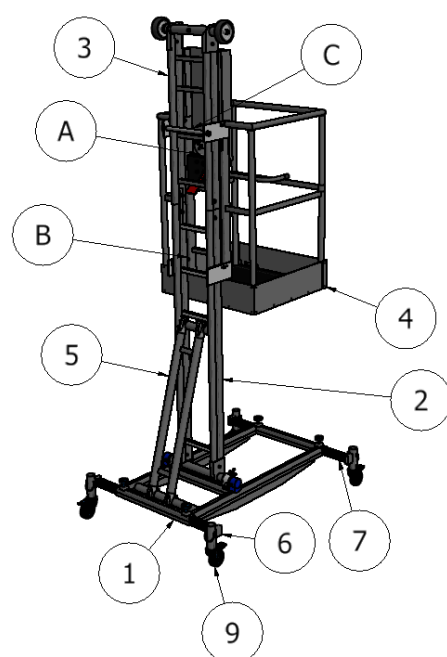
1.1 Application

The XS Lift is a manual one-man elevator intended for indoor use. The XS Lift is easily collapsible and can therefore pass through normal doorways. The elevator can be used up to a working height of over 4 meters, in combination with an extension. Due to the absence of a motor, the continuous sound pressure remains below 70 decibels.

If in doubt, always consult your supplier or the manufacturer; the contact information can be found at the front.

1.2 List of components

Nr.	Onderdeel	Nummer
1	Base Frame XS-lift	8719998051889
2	Mast section (under) XS-lift	8719998051896
3	Mast section (above) XS-lift	8719998051902
4	Lifting bucket XS-lift	8719998051919
5	Double brace XS-lift	8719998051926
6	Wheel foot left (excl. wheel)	8719998051933
7	Wheel foot right (excl. wheel)	8719998051940
8	Steel cable XS-lift with hook	8719998051957
9	Wheel 150mm + locking clip	8719998051964
A	Winch	8719998051971
B	Tube	8719998051988
C	Large lockingpin + clip	8719998051995



A XS-Lift can be constructed by one person.

2 Assembly and use

2.1 Positioning of the XS Lift

2.1.1. Sureface

Always place the XS-Lift a stable and horizontal surface. Make sure that the elevator cannot sink into the ground. In addition, the general slope of the surface may not be steeper than 1 degree.

2.1.2. Lighting

Ensure that the work environment is adequately lit.

2.1.3. Obstacles

Place the XS Lift in such a way that no danger for the user arises when getting on or off the lift. Pay attention to any obstacles on the ground and/or obstacles that might require additional effort for the user to reach the upper platform.

2.1.4. Weather conditions

Preferably do not use the XS Lift at ambient temperatures below freezing.

2.2 Personal protection equipment

- Always wear work gloves, safety shoes and a safety helmet.
- When working at height, use a life-line.



2.3 Assembly

The aluminum XS Lift can be assembled by anyone. No tools are required for assembling.

Check all components (use the list of components) that are required for assembly, are present and undamaged. Damaged components should not be used.

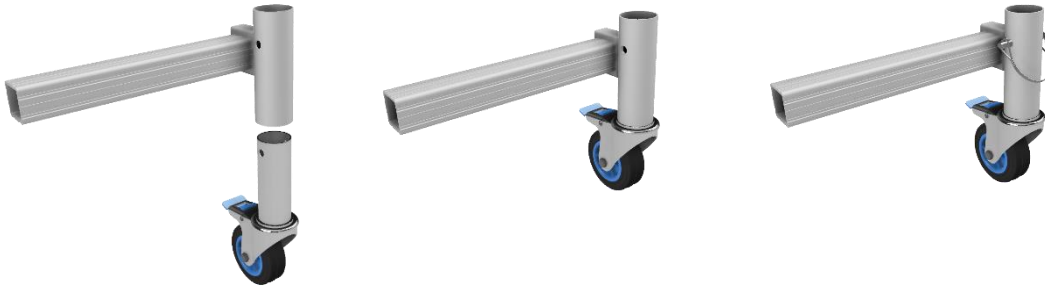
For checking for damage: see section 3.



Watch the assembly instruction video on youtube: <https://youtu.be/TWd107ReGTo>

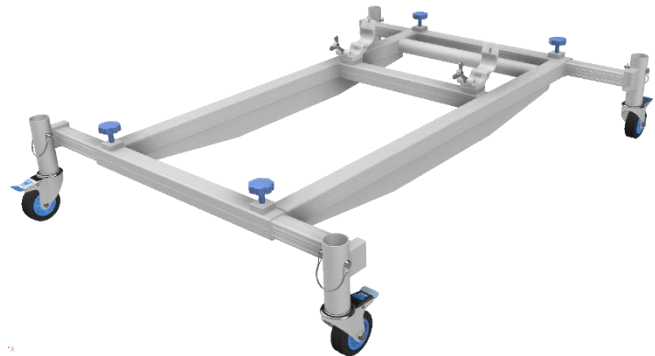
2.4 Assembly Instructions

1. Insert the wheels (9) into the footings (6 and 7) and secure them with a locking clip.



2. Now insert the feet into the base frame (1); the white bar on the sticker should just be visible.

3. Put all wheels on the brake.



Keep the double brace (5) within easy reach.

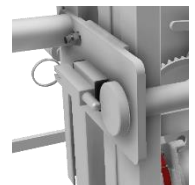
4. Open the couplers, put the lower mast section (2) in and close the couplers. Then hand-tighten the wing nuts.



5. Place the double brace (5) so that all the cocked claws are closed. Then further tighten the couplings from step 4.

6. Place the lifting bucket (4) on the frame, with the nylon plates sliding over the mast.

7. Pull back the wind spring, pushing the large locking pin through the holes. Then release the wind spring.



8. Secure the large locking pin with the locking clip (C).

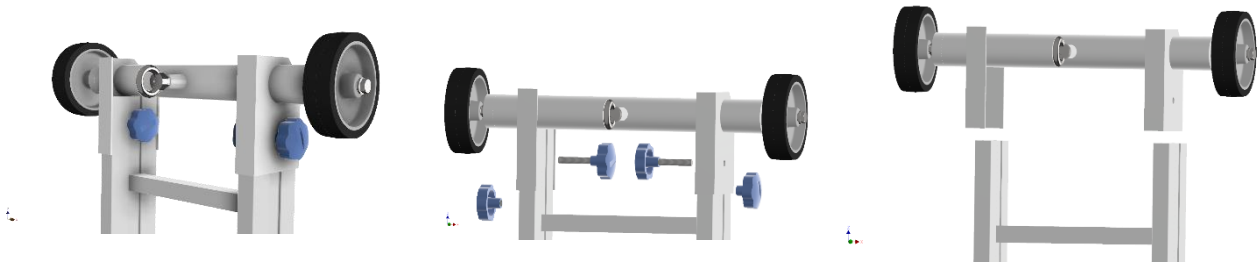
9. Unroll the steel cable (8) and attach the hook to the eye at the top of the mast. This should preferably be done using a ladder.



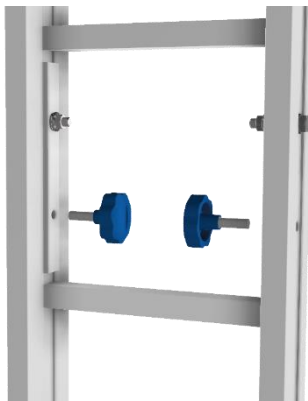
The XS Lift is now ready for use. When moving, make sure that the brakes are properly applied.

2.5 Assembly Instructions for the Extended Mast

1. Loosen the reinforcement knobs on the masthead and slide the masthead over the end of the mast.



2. Slide the masthead further, over the extension frame. Then tighten the reinforcement knobs again.
3. Remove the star knob from the bottom of the extension frame.
4. Slide the extension piece (3) over the existing mast.



5. Insert the removed star knob through the inner plate and then tighten it into the large intermediate plate. Attention: this must fall in the hole of the already existing mast.

2.6 Use

Before use, please check that:

- All parts are still present
- All the parts are still properly attached
- The XS-Lift is still perpendicular
- There are any changes in the surroundings which may affect safe use
- The brakes are working on the wheel
- All locking clips are correctly in place

A number of components need closer inspection.

2.6.0. Bolts and bushes of the rolling mechanism

There should be no cracks in the bushings or the bolts. If used frequently, check the bolts at least once a month by unscrewing them and looking at them. The bolts may warp; if so, replace them before use.

2.6.1. Large locking pin and clip

Check whether any cracks or gross damage are visible on the surface of the large pin, and whether the locking clip and wind spring are working properly. The retaining clip and wind spring must not become loose without an external force.

2.6.2. Wire rope

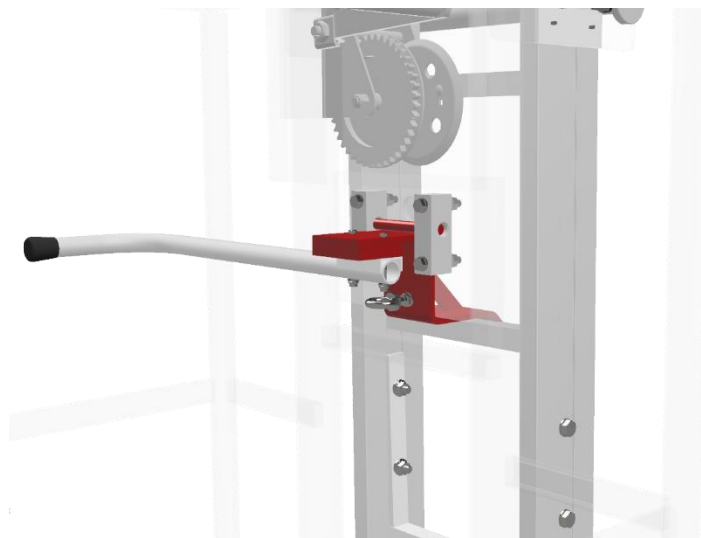
Check the entire wire rope for breaks or folds. Split steel wire ropes indicate a wire rope break; the XS Lift must not be used in this case. Sharp creases seriously weaken the cable. Again, do not use the XS Lift.

2.6.3. Winch

Check the winch for proper operation in accordance with this manual (see Appendix 2).

2.6.4. Locking system

Check that the system remains hooked behind the mast sleepers in a downward direction



The user position is also the position at which, in the event of a cable break, the lifting bucket will be caught. After use, make sure the lifting bucket is back on the base frame.

2.7 Using of the XS-Lift

Under no circumstances should the lock system be blocked to the point where it is no longer functioning properly.

Turn the winch (A) to lift yourself up. Put the elevator in the working position by turning the hoisting bucket back down until the locking system - not the steel wire - is carrying most of the weight.

Using the winch, pull the bucket up slightly to lower again. Then pull the handle of the lock system all the way up so that it runs along the crossbars of the mast. Turn the winch again until the hoisting bucket is back on the base frame.

2.7.0. Extension / raising

Never elevate the XS Lift with a tool. Therefore, do not use stairs, ladders, crates or steps. Extension of the XS Lift is only possible with the extension piece designed for this purpose. See instruction section 2.5.

2.7.1. Maximum Authorized Weight

An XS Lift is designed for a maximum weight of 120 kg.



2.7.2. Further loads

When working on the XS Lift, forces are exerted on the structure. Consider, for example, the impact against a building when drilling into a wall. Such external loads must always be taken into consideration. Should you have any additional requirements in this regard, this will need to be discussed with the supplier.

Do not attach any parts to the XS-lift.

2.7.3. Stabilization

The XS Lift may only be entered after the extension tubes have been extended to the maximum. For this purpose, follow the marking on the sliding tube.

2.7.4. Extension of the platform

Under no circumstances may the platform be extended or the XS Lift be used as a starting point for a bridge.

2.7.5. Side boards

Side boards are always mandatory on the platform being worked on. The front cover may therefore never be removed.

2.7.6. Brakes

The swivel wheels are equipped with a brake, which must always be locked when using the XS Lift. Step down on the colored surface to activate the brake.

2.7.7. Moving

The XS Lift is easy to move.

Please note that:

- Move the XS Lift only if the lifting bucket is on the base frame.
- Slide in the legs, if required.
- Snap on the brakes before moving.
- Pull only on the base of the XS Lift.
- Make sure the XS Lift cannot touch overhanging cables or other objects.
- Do not leave loose objects on the XS Lift.
- Make sure that no people are standing on the XS Lift.

Go through the checklist again starting with section 2.6.

2.8 Chemical products

Avoid contact with acids and chemical products. These can cause corrosion to the aluminium, which can affect the strength of the aluminium.

3 Inspection, care and maintenance

According to the regulations one must work safely at heights. On an XS-Lift, it is not obligatory to wear extra fall protection (provided that the recommendations in this manual have been followed).

3.1 The Health and Safety Law

The Working Conditions Decree is a concrete elaboration of the Safe Working at Height Act. It states that everything above 0 meters is 'working at height' and is therefore a situation with increased risk of injury. This also means that all materials must be properly manufactured and checked in a quality cycle. ASC tests all materials and performs strength calculations. The user must also have the material inspected annually for defects.

3.1.1. Annual control

Your ASC Mobile Tower must be inspected for any defects annually by an expert. The ASC Group can perform this control for you.

3.1.2. Self-inspection

The ASC Mobile Tower can be inspected by yourself. Before each use, always check the components for any damage. We certainly recommend larger companies to do a monthly inspection of all components of the Mobile Towers and to record this inspection. If you are in doubt about damage, consult an accredited inspector.

3.1.3. Damages

Examples of the most common damages on XS Lift;

- Components: if a claw or a sport is loose, the mobile scaffolding must be rejected.
- Dents and or holes: if there is a big dent in the aluminium or even a crack or hole, the scaffolding must be rejected.
- Contamination: if there is too much concrete, paint or other non-removable contamination on the components, the scaffolding must be rejected; after all, you can no longer judge whether the components are still intact.

3.1.4. What to do in the event of damage

If there is any damage, which cannot be repaired, the component must be taken out and replaced. If repairing is possible, please contact ASC Group for further information.

3.1.5. Repair

Repairing a component must be carried out by a certified body or person.

3.2 Transport

- Always transport the components in accordance with the locally applicable legislation.
- Stack the components correctly for transport; never place the heavy components on top.
- Transport the components of a scaffolding, preferably standing, f.e in a carrier.
- Handle the material with care. Do not drop components onto a hard surface; this can reduce the quality of the material.

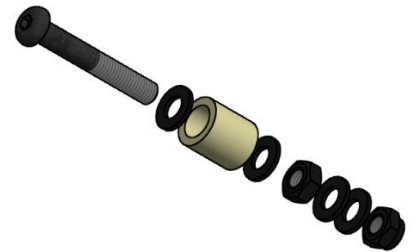
3.3 Maintenance

Before maintenance, the XS Lift must be dismantled in parts.
Only certified persons may perform this maintenance.

- Make sure the material is clean.
- Always wear the necessary personal protective equipment.
- Replace missing and broken parts in a timely manner.
- Parts should be of the same (or higher) quality.
- Most parts are recyclable; return them to the manufacturer or to a recycling service.
- Do not use oil or other types of grease; these agents can damage the aluminium.

3.3.0. Roller tube

You can replace a roller tube with a similar one yourself. To do this, unscrew the outer bolt. Remove the bolt from the plate and then unscrew the remaining washer from the bolt. Replace the bushing and possibly the washers (the washers should always be smaller than the bushings). Screw the inner washer onto the bolt so that the tube and washers are just free to rotate. Pay attention to the placement in the holes: it should be such that the floor of the hoist box is as horizontal as possible. Insert the structure through the appropriate hole and tighten the second washer against the metal. The tube must be able to rotate freely.



3.3.1. Lifting cable

You can replace the hoisting cable yourself if you have the right tools. However, the cable must be suitable for the winch and the intended work. Make sure that the cable has the correct tensile strength (see Appendix 1 for the connection to the winch and Appendix 2 for the required cable). To connect the hook, insert the wire guide through the eye of the hook. Then also pass the cable through and lay it over the guide. Clamp the cable together with the appropriate cable clamps and make sure that the conductor cannot come loose from the resulting noose. If in doubt, contact the manufacturer.

3.3.2. Winch

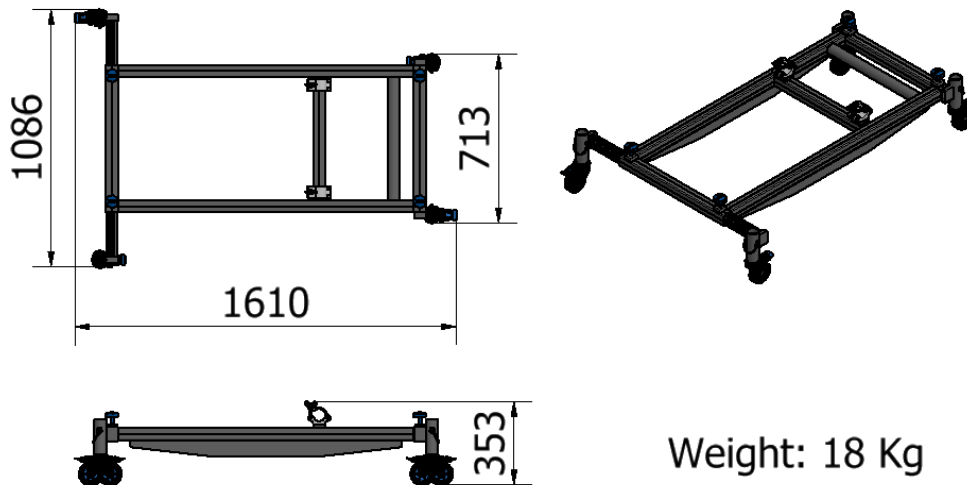
The base of the winch must have the correct holes for the connection sleeve. Under no circumstances should the connection sleeve be drilled. Place the winch on the holes in the connection sleeve according to the instructions supplied.

3.4 Storage

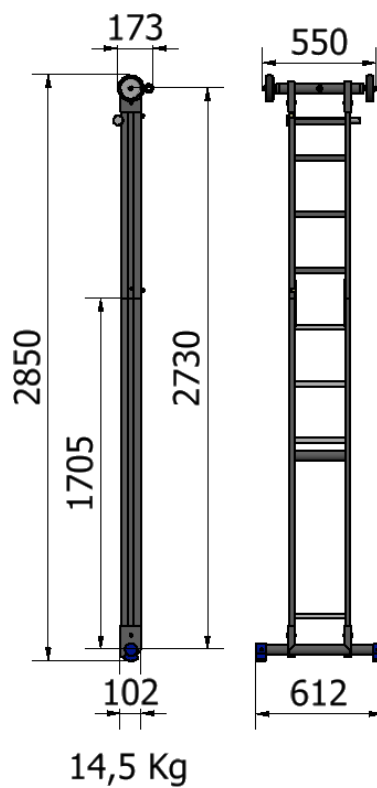
Store components of the scaffolding preferably in a dry, clean, dark and frost-free place.

4 Technical Specifications

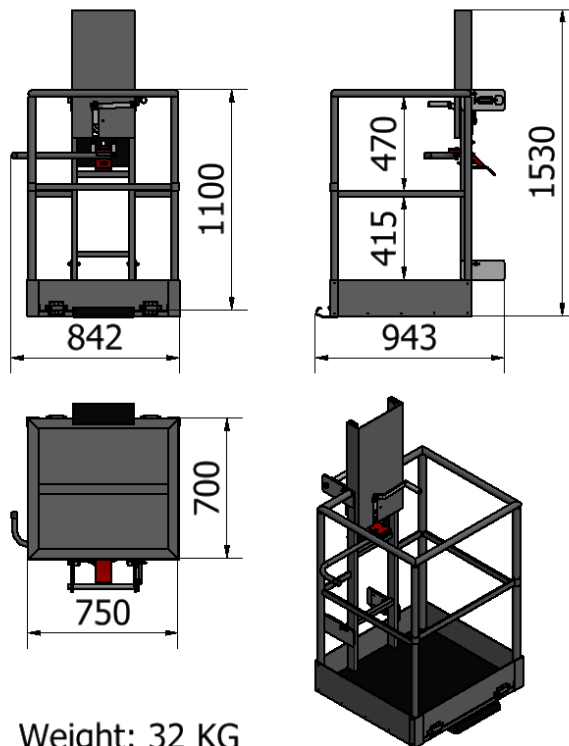
4.1 Base Frame



4.2 Mast (below and above)



4.1 Lifting bucket



Weight: 32 KG

4.2 General specifications XS-lift

Maximum speed	0,1	m/s
Maximum permissible weight	120	kg
Maximum calculated weight	150	kg
Minimum boarding height	280	mm
Maximum platform height without extension	88	cm
Maximum platform height	1,71	m
Maximum height in and out of service	5	m
Maximum platform dimension	750 x 700	mm
Total weight	67	kg
Maximum lateral push-off force	300	N
Allowable weight during travel	20	kg
Area required to set up	1,5 x 5	m

Without extension

4.3 Problem solutions

Issue	Possible Cause:	Possible solution:
Lifting bucket gets stuck	Buses are broken	Replace the bushings; see section 3.3.1
	Winch is broken	
	Lifting bucket is tilting	Replace the winch; see section 3.3.3
	Locking system does not move anymore	
		Replace the whole hoist box
	Wire is frayed	Remove possible obstacle
	Mast is bent	Rotate the bucket slightly upwards to release the locking system
Moving the XS Lift is still possible	Brakes are worn out	Immediately lower the hoist basket onto the mast cross member and climb out using a ladder; replace the wire rope
	Brake may not be fully applied	Replace the mast
Mounting is not possible	Parts are bent or incorrect	Replace the wheels
Wall bar clamps	Rod can only be lifted diagonally	Apply the brake until the lever is on the wheel
Lift does not move	Wheel is blocking	Contact manufacturer
Issue	Wheel is broken	Gently tap the top end down slightly to release the rod